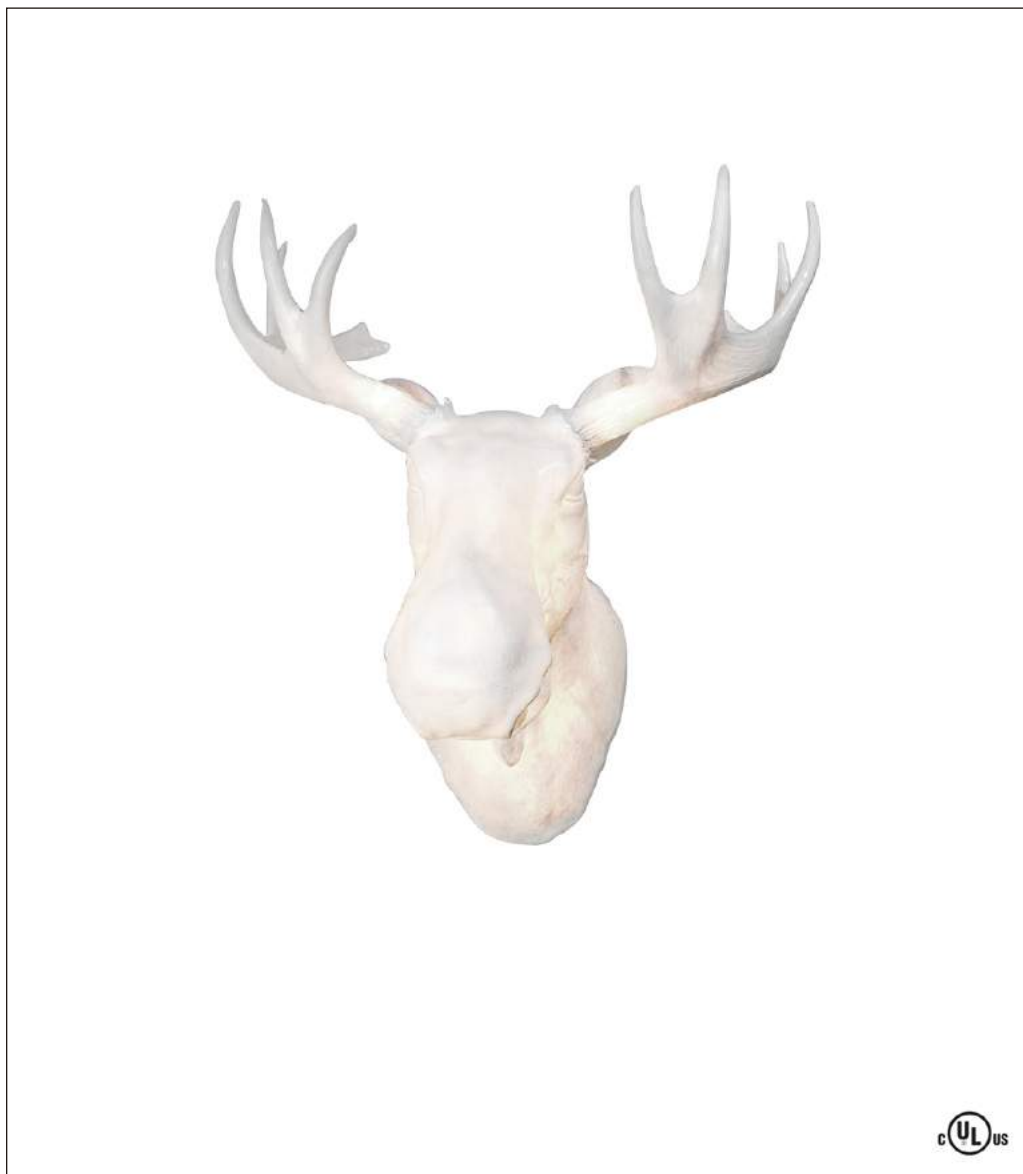


Stratos Collection

Moo Wall



Design by: Trond Svendgård & Ove Rogne

The hunt for a whimsical light fixture-cum-conversation starter is over: Northern Lighting's Moo wall light will net you glowing accolades whether mounted over the fireplace mantel or on any wall in any room, just for fun! Designed by Trond Svendgård and Ove Rogne, they call their poly-resin light fixture a post-modern kitsch trophy.

Ordering Matrix

Model

272

LED

HEAD: 2 x 11W E26, A19
HORNS: 2 x 4W E12

Fluorescent

HEAD: 2 x 18W GU24, Spiral
HORNS: 2 x 7W E12, Spiral

Finish

WHT = White

Fixture as shown

272	LED	WHT
Moo Wall	2 x 11 / 2 x 4	White

Finishes



White

