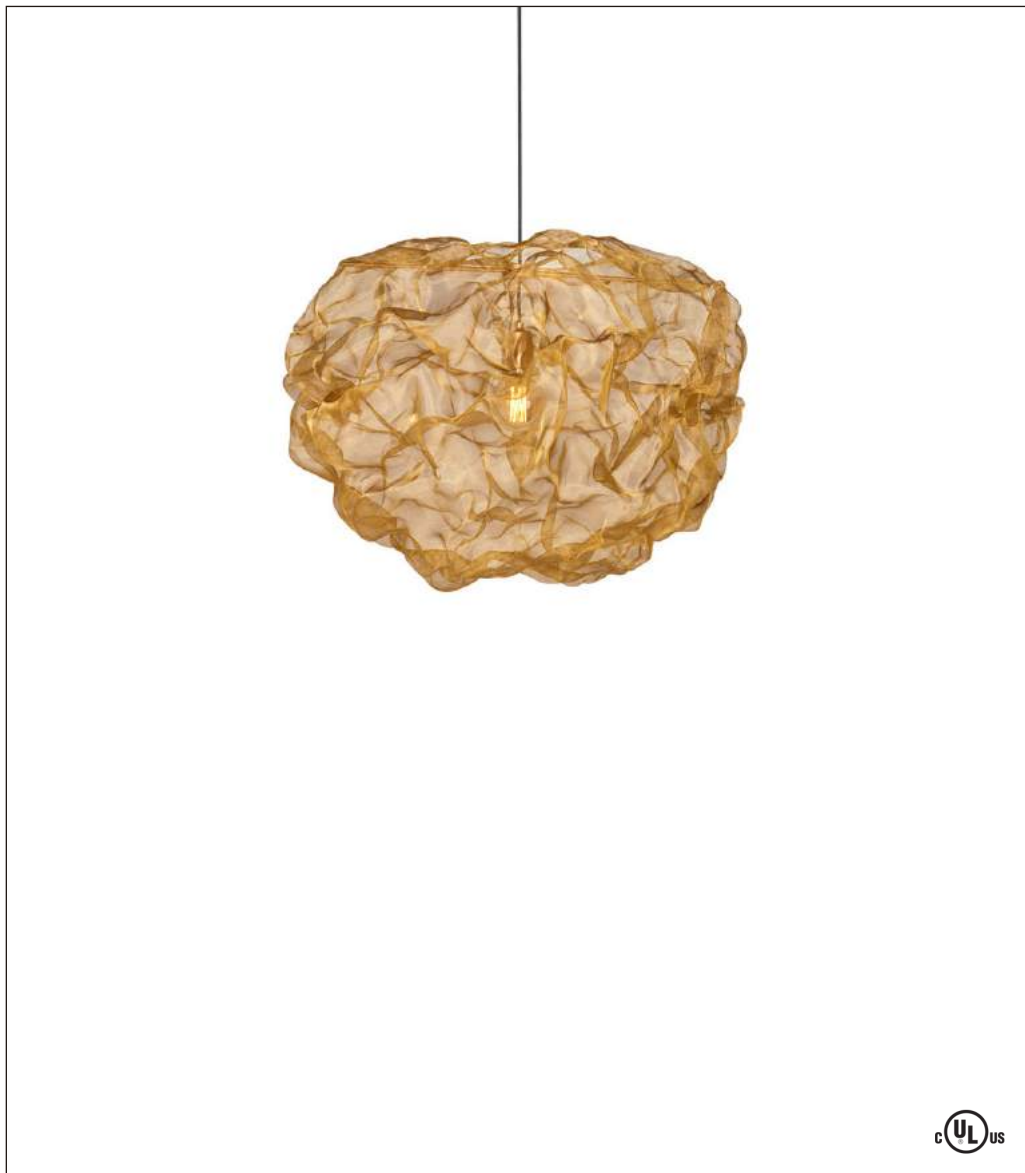


Northern

Heat Pendant



Design by: Johanna Forsberg

Like a shimmering chimera wafting from a landscape on a sunny summer day, the Heat pendant, designed by Johanna Forsberg, seems to be in continual movement. That's a ruse because the structure is solid in a folded fantasy of gleaming brass mesh. The material experimentation that birthed this charismatic fixture was inspired by the pendant's organic personality—fiery when the bulb is illuminated and cloudy when it is not. This is the perfect fixture to showcase the array of Edison bulbs that have become so popular.

Ordering Matrix

Model

481 = Gold

LED

1 x 4.5W E26, A19, 2700K

*GU24 base available upon request.

Shade

GLD= Gold

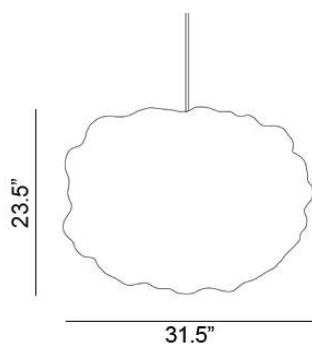
Fixture as shown

481	LED	GLD
Heat Pendant	1 x 4.5W	Gold

Shade



Gold



Its Thyme