



VISO LIGHTING

## BRIGGS

### INSTALLATION MANUAL

LED 1500mA 110V - 240V 3000K

**SM** – 1 x 30W LED (Integral)

**MM** – 1 X 36W LED (Integral)

**GM** – 1 X 48W LED (Integral)



#### IMPORTANT

Always shut off power before cleaning and maintenance.



All products are manufactured to meet or exceed North American standards C22.2-250, UL 1598, C22.2-12, C22.2.9, UL 153.

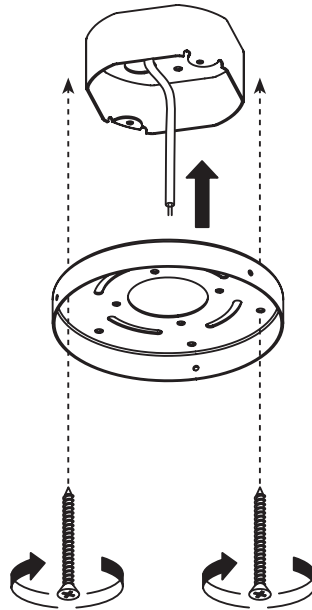
All preparation for installation of fixture is to be provided by the end user.

The description and measurements on this drawing are for information purposes only.

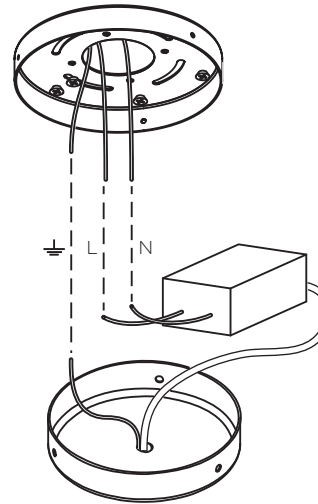
VISO © 2018 All rights reserved.

MADE WITH ♥ IN TORONTO

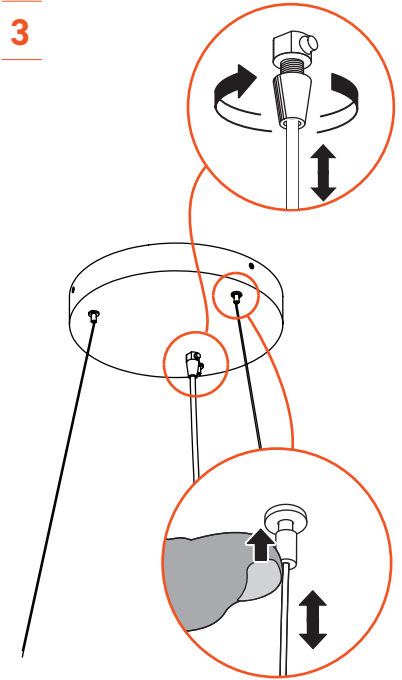
1



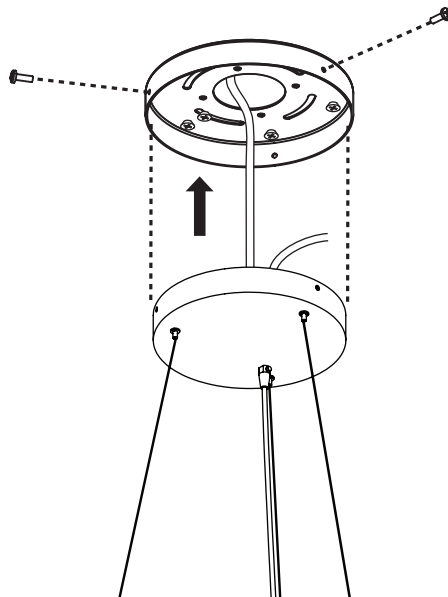
2



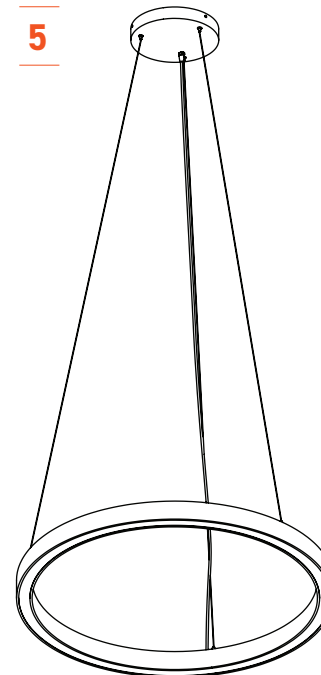
3



4



5



Its Thyme