

Guapa S M CU Chair

design Sempere#Poli Design, 2014

Chair with sled base and structure available in chrome, pink gold, black nickel or lacquered steel. Seat and backrest are in hide.



Colors and Materials

Structure



White steel



Black steel



Sand steel



Grafite steel



Industrial steel

1 color



Fango steel



Bronze Steel



Pastel yellow steel



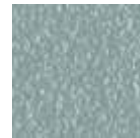
Ocher steel



Red steel



Sage green steel



Light blue steel



Ocean blue steel



Light grey steel



Facepowder pink steel



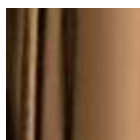
Chrome



Pink Gold



Black Nickel



Golden bronze

Coating



Tuscan hide
3 Colors



TK Hide
9 Colors

Dimensions

Dimensions



	cm	inch
A	78	30.7
B	50	19.7
C	52	20.5
D	46	18.1

Volumetric Details

Weight 10 Kg
Volume 0.25 mc
Package 1

Materials Certifications

Tuscan hide

Cuoio Toscano - Tuscan Hide

Cat. CT



C3M2 (UT10)
Naturale
Hide



C3M2 (UT14)
Marrone
Brown



C3M4 (UT15)
Nero
Black

Tuscan Hide does not fear to get aged since the oldest it gets the more unique it becomes.

It is a material deriving from animal's leather which suffer a process called "vegetable tanning" with natural tannins and with the help of some products biologically compatible whether for the dyeing or for the finishing.

Any possible imperfection, sign, scar, stain of the Tuscan hide surface are a natural characteristics which guarantees its originality.

Materials Certifications

TK Hide

Cuoio TK - TK Hide



K05
Bianco
White



K64
Rosa cipria
Facepowder pink



K22
Ocra
Ocher



K69
Verde salvia
Sage green



K66
Azzurro
Light blue



K67
Blu oceano
Ocean blue



K18
Grigio cenere
Ash grey



K54
Fango
Fango



K04
Nero
Black

PROPRIETIES AND ADVANTAGES

The hide is a hygienic and very practical product: it resists to wear, it's impermeable to water but, at the same time, the hide wicks air and sweat. The hide is obtained from the skin of bovines breeds and slaughtered for food purposes and subsequently treated with chromium salts.

CLEANING INSTRUCTIONS

Use only a damp, non abrasive cloth; do not use products containing solvents or alcohol that may damage the surface. It is advisable to test an invisible area of the product before cleaning it all. For good preservation of the product purchased, it is unadvisable to expose it to direct sunlight that may alter its features and colours. Any surface imperfections are natural features of hide and guarantee that it is an original product.