

# Guapa H75 M CU Stool

design Sempere#Poli Design, 2014

Bar stool with sled base and footstool. Frame available in chrome or lacquered steel. Shell in hide. Seat height: 75cm (29.5")



## Colors and Materials

### Structure



White steel



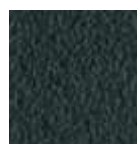
Black steel



Sand steel



Brown steel



Grafite steel



Fango steel



Bronze Steel



Pastel yellow steel



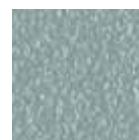
Ocher steel



Red steel



Sage green steel



Light blue steel



Ocean blue steel



Acier gris claire



Facepowder pink steel



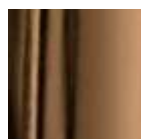
Chrome



Pink Gold



Black Nickel



Golden bronze

### Coating



**Tuscan hide**  
3 Colors



**TK Hide**  
9 Colors

## Dimensions

Dimensions



	cm	inch
A	107	42.1
B	50	19.7
C	54	21.3
D	75	29.5

## Volumetric Details

**Weight** 11.5 Kg

**Volume** 0.34 mc

**Package** 1

## Materials Certifications

Tuscan hide

### Cuoio Toscano - Tuscan Hide

#### Cat. CT



**C3M2 (UTM)**  
Naturale  
Hide



**C3M2 (UTM)**  
Marrone  
Brown



**C3M4 (UTM)**  
Nero  
Black

Tuscan Hide does not fear to get aged since the oldest it gets the more unique it becomes.

It is a material deriving from animal's leather which suffer a process called "vegetable tanning" with natural tannins and with the help of some products biologically compatible whether for the dyeing or for the finishing.

Any possible imperfection, sign, scar, stain of the Tuscan hide surface are a natural characteristics which guarantees its originality.

## Materials Certifications

TK Hide

### Cuoio TK - TK Hide



**K05**  
Bianco  
White



**K64**  
Rosa cipria  
Facepowder pink



**K22**  
Ocra  
Ocher



**K69**  
Verde salvia  
Sage green



**K66**  
Azzurro  
Light blue



**K67**  
Blu oceano  
Ocean blue



**K18**  
Grigio cenere  
Ash grey



**K54**  
Fango  
Fango



**K04**  
Nero  
Black

#### PROPRIETIES AND ADVANTAGES

The hide is a hygienic and very practical product: it resists to wear, it's impermeable to water but, at the same time, the hide wicks air and sweat. The hide is obtained from the skin of bovines breeds and slaughtered for food purposes and subsequently treated with chromium salts.

#### CLEANING INSTRUCTIONS

Use only a damp, non abrasive cloth; do not use products containing solvents or alcohol that may damage the surface. It is advisable to test an invisible area of the product before cleaning it all. For good preservation of the product purchased, it is unadvisable to expose it to direct sunlight that may alter its features and colours. Any surface imperfections are natural features of hide and guarantee that it is an original product.